



modeling magazine

The New Innovator for Business Analysts
BPMN, Business Processes, Use Cases and More

Innovator for Requirements
Integrating Models and Textual Requirements

SAP and Innovator
Implementing and Customizing Model-Based Standard Software

Dear Readers,



Numerous BPEL design tools have come to light as business process modeling tools over the past few years for the sole reason that they can be used to model a workflow. The new BPMN 2.0, which was released by the OMG as Beta 1 in August 2009, offers a significant increase in possibilities for "real" business process modeling.

This issue of the magazine presents the new *Innovator for Business Analysts*, which will put these possibilities into practice. To call the youngest member of the Innovator family merely yet another BPMN or business process modeling tool is unjustified.

Innovator for Business Analysts is a modeling tool which not only implements BPMN standards, but also supports modeling of a certain role – in this case, that of the business analyst. This means that we not only offer BPMN but also parts of UML, specific extensions and integration of requirements with business models. This makes *Innovator for Business Analysts* a model-based analysis tool which can be combined with other tools for software development, SOA governance or database design. This new focus means that laborious customizing of specific solutions from UML or BPMN universal tools using scripts and extensions becomes a thing of the past. Role-specific model-based tools permit the use of UML, BPMN or suitable DSLs and enable necessary integrations in e.g. SOA middleware.

Many of our customers employ complete, customizable solutions, such as SAP or Oracle Siebel and integrate these into the rest of their IT landscape using SOA. *Innovator for Business Analysts* will enable a standardized analysis from the business side of things and for this analysis to be further linked depending on implementation of the components or services involved. On page 12, you can read how *Innovator* models are mapped in the SAP Solution Manager to integrate SAP solutions in this picture which will then enable SAP solutions based on models to be customized.

I am also happy to announce that our customer magazine is now in demand in international reading circles. An English issue of the magazine will, therefore, also be available for download as pdf alongside its German counterpart.

Enjoy reading the fourth issue of the Modeling Magazine and I look forward to hearing your comments sent to magazine@mid.de.

Jochen Seemann
Managing Director MID GmbH

CONTENTS

3

News

4

Innovator
for Business Analysts

10

Innovator
for Requirements

12

SAP and Innovator
Implementing and Customizing
Model-Based Standard Software

14

MID User Conference
Insight'09

16

MID at the OOP 2010

LEGAL NOTICE

Modeling Magazine Issue 4
December 2009

Publisher
MID GmbH
Eibacher Hauptstraße 141
90451 Nuremberg/Germany
tel.: +49 (0) 911 - 968 36-0
fax: +49 (0) 911 - 968 36-10
info@mid.de
www.mid.de

For the purposes of German media law,
editorial responsibility is held by
Jochen Seemann, Managing Director

Project Management
Ilka Plail - i.plail@mid.de

Editorial Department
Renate Herrmann - r.herrmann@mid.de

Insight'09 Photos
Arnold Senn - a.senn@mid.de

Layout
Martina Baldauf - www.herzblut02.de

Copyright © MID GmbH • All rights reserved.



MID Supports Deutsche Rente with SOA Implementation

MID's public bid for a framework contract for the Deutsche Rente Bund's (German Pension Federation) SOA project led to MID winning an agreement contract for seminar and training services. The framework agreement comprises measures for qualifying a service-oriented architecture within the framework of implementation.

The first analysis and modeling of business processes in SOA seminars in November got off to a good start, with high satisfaction from participants recorded.

MID Models in the ELENA Project for the Bundes Agentur für Arbeit

Along with Siemens in a bidding consortium, MID won the bid for the Bundesagentur für Arbeit's (Federal Employment Agency) ELENA project. The object of the contract is to develop software for implementation of requirements from the ELENA Bill of Procedure (electronic remuneration statement).

The functions which need to be implemented will be carried out within a project scope of 7,000 man-days over a two year period. This comprises e.g. registering participants in the ELENA system, receipt of participant consent and obtaining all work permits in electronic form in the central storage location. MID is responsible for the area of modeling within the consortium and supports the areas of development and testing.

OMG Releases BPMN 2.0 Beta

The Beta version of OMG's new BPMN 2.0 standard for process modeling has been available for download since mid August. The team which created this standard officially completed their task by doing so. Another finishing task force (FTF) started their work, which should have the last errors smoothed out of it by June 21, 2010; these errors are found by e.g. tool manufacturers such as MID when implementing BPMN 2.0. BPMN 2.0 has had a wide variety of improvements made to it compared to BPMN 1.x and requires a real modeling infrastructure, such as the Innovator modeling platform, to be used properly. MID already uses parts of BPMN 2.0, starting with the first version of *Innovator for Business Analysts*.

The New Generation is Here - Innovator for Business Analysts

Innovator for Business Analysts is the first in the line of the innovative generation of modeling tools which combine modeling languages from various standards and, in doing so, provide a tool for a special role – in this case, for the business analyst. With the same look-and-feel as Office 2007, business analysts and process modelers can use BPMN to model business processes, analyze UML requirements and model business objects.

You can read more about *Innovator for Business Analysts* on page 4.



Modeling goes Business Track at the OOP 2010

Modeling and model-driven development have really become part of the furniture in development departments. Current trends, such as business process models with BPMN, workflows in BPEL, implementing in an SOA and modeling requirements, mean that modeling plays an ever increasing role for IT architects and business analysts to bridge the often quoted gap between the operating department and IT. The Modeling goes Business Track is part of the OOP2010 conference program and will be presented by Jochen Seemann, MID Managing Director.

Four speeches will discuss real-life experiences of how modeling is implemented in business and the possibilities this creates.

Better Business Models Using a Combination of BPMN, UML and DSLs

Jochen Seemann, MID

Model-Based Intelligence – First-Hand Experiences in a Complex Data Warehouse Environment

Michael Müller, MID

Efficient Implementation of SOA with Use Case-Driven Analysis Models

Berthold Maier, Oracle Deutschland

How to Effectively Control IT Projects by Integrating Modeling and ALM or Modification Management

Raimund Czech, T-Systems

January 26, 2010
at the OOP 2010 in Munich
You can find more information about the speeches under:
www.mid.de/ModelingGoesBusiness

Innovator for Business Analysts

The role “business analyst” was defined as team members act as intermediates between IT and department to communicate new requirements for IT applications and agree on the department’s requirements.

Many tools are used for this task, above all Office applications, requirements management systems and, of course, modeling tools, including e.g. tools for business process modeling; these, however, are often part of BPA suites (Business Process Analysis) primarily designed for viewing, analyzing and improving business processes.

Business processes have always been the most important specification for operating departments, even before SOA. IT projects are normally started because the department has to support another business process; this means that the IT system used has to be modified to fit within the framework of a project.

On top of business processes there are a multitude of requirements, often communicated in the form of documents or e-mails. Many organizations introduce requirements management systems to manage requirements. This requirements management is normally carried out independently from managing business processes.

Business analysts also often use UML modeling tools which can define other parts of an IT application using e.g. use case models.

New Innovator Generation

Based on these thoughts, the youngest member of the Innovator product family was born, *Innovator for Business Analysts*.

This product is groundbreaking for MID for two reasons: On the one hand, it demonstrates MID’s new role-oriented product strategy which is not about implementing a certain model language like BPMN or UML in a tool, but rather combining various concepts from various standards and languages for a role in IT. On the other hand, it is the first product of the new Innovator generation and already implements a completely new user concept with a user interface based around the familiar Office layout; the same will also apply for the complete Innovator suite in the next few years.



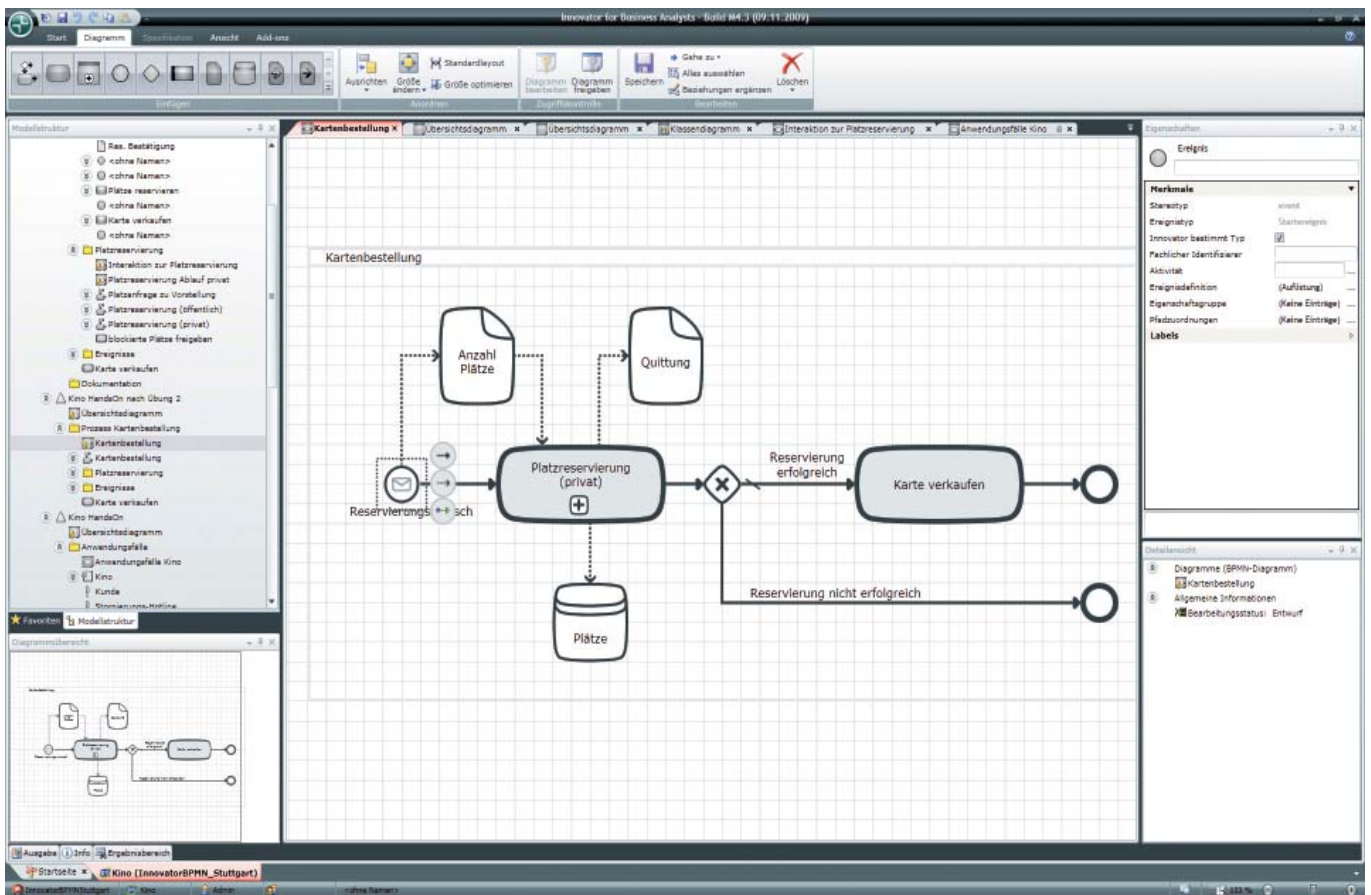


Fig. 1: Intuitive: Innovator for Business Analysts User Interface

Innovator for Business Analysts

With *Innovator for Business Analysts*, a new tool was created which enables definition and requirements specification for IT applications and SOA. *Innovator for Business Analysts* comprises:

- Business process modeling with BPMN 2.0
- BPMN 2.0 extensions for modeling window flows and mask flows
- Requirements specification with textual requirements for textually obtaining business rules, as well as general functional and non-functional requirements and for combining these with BPMN models
- Use case modeling in accordance with UML 2 for defining use cases for individual applications and for SOA services
- Class modeling in accordance with UML 2 for modeling e.g. business domain models, analysis models or message structures in an SOA

The aim was to simplify modeling as much as possible, while keeping all

of the advantages of formal modeling tools, such as Innovator. This is why the new *Innovator for Business Analysts* also uses the Innovator server for centrally managing models; this enables teams to work together even when spread out over several different locations.

User Interface Looks Like Office

Innovator for Business Analysts is based on the Microsoft Office product family and has a brand new look, as shown in Figure 1. At the top of the picture is the ribbon, which contains one of the model element's toolboxes customized to the situation. To the left is the model structure; the property browser and the diagram overview display are to the right. To the left is the model structure; the property browser and the diagram overview display are to the right. All windows can be moved around by the user, as with integrated development environments. It is also possible to maximize the diagram with one simple command so that just the diagram can be viewed.

WPF-Based Diagrams

MID has developed a completely new diagram interface based on Microsoft .NET WPF (Windows Presentation Foundation). The first difference which leaps to mind is that diagrams no longer have a scroll bar; the user can use the mouse to move around the diagram and zoom in and out using the mouse wheel, similar to Google Maps. An overview display can also be used to pan and zoom.

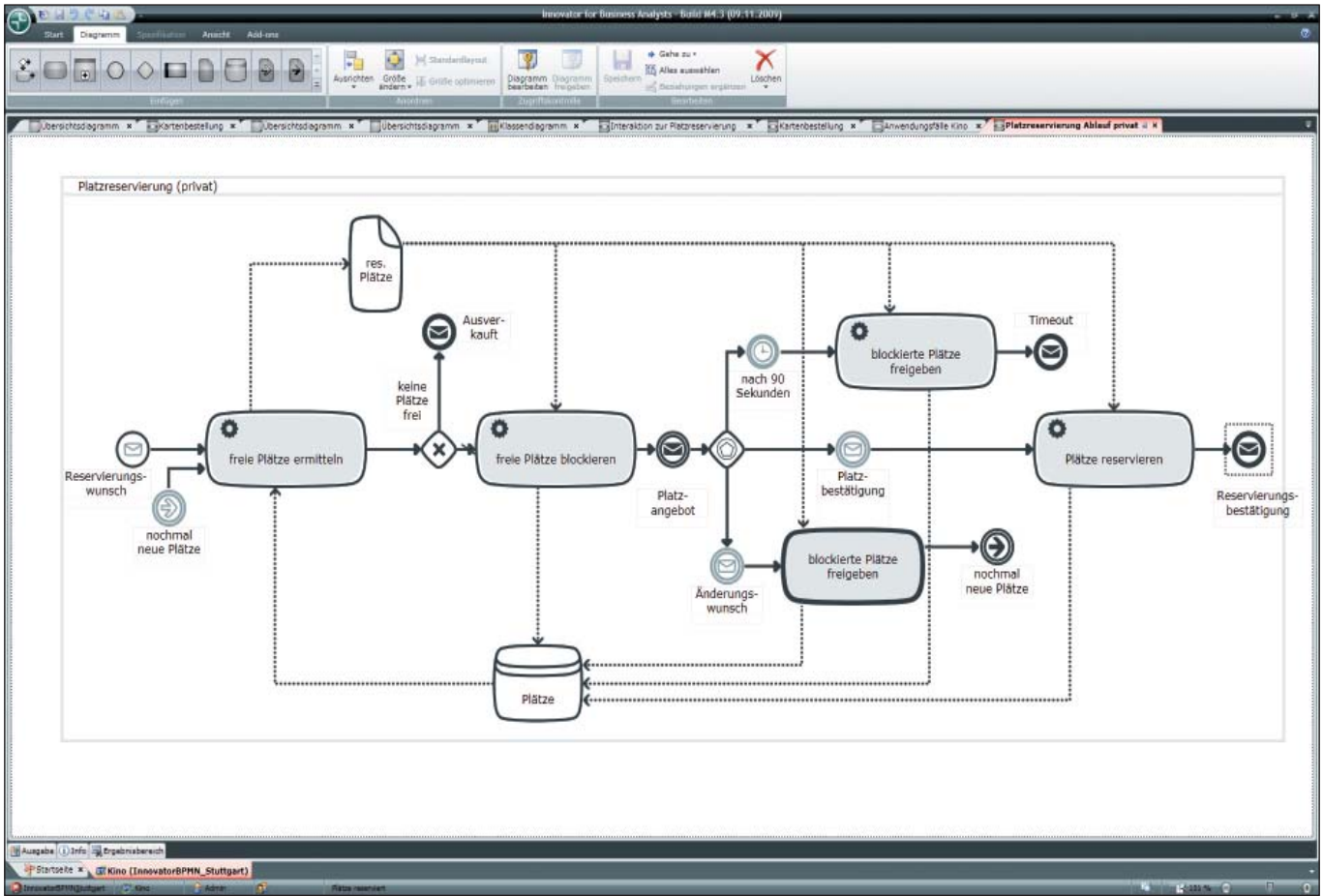


Fig. 2: BPMN Process Diagram

**Smart:
The New BPMN 2.0 Editor**

The most important component of *Innovator for Business Analysts* is an editor for process modeling (Fig. 2). The new BPMN 2.0 (Business Process Model and Notation), which was first presented as Beta 1 in August 2009, is supported. The new BPMN is the standard for business process modeling and had new concepts added to it in version 2.0 to enable modeling of processes

right up to the mapping of an SOA. BPMN was implemented in *Innovator for Business Analysts* in an attempt to give the editor as smart a look as possible. An example of this: BPMN recognizes a large number of different event types. *Innovator for Business Analysts* assumes that an unrelated event is a start event (Fig. 3a). If this is connected to an inflowing sequence flow in the event, *Innovator for Business Analysts* modifies the event type into an end event

(Fig. 3b). If another relation is added to the event, it automatically becomes an intermediate event. The element then becomes a model if drag-and-drop is used to drop a message definition on it (Fig. 3c). In this way, the tool attempts to make using BPMN elements as simple as possible. Extension possibilities are another distinctive feature of BPMN implementation in *Innovator for Business Analysts*; these are based on the normal Innovator mechanisms.

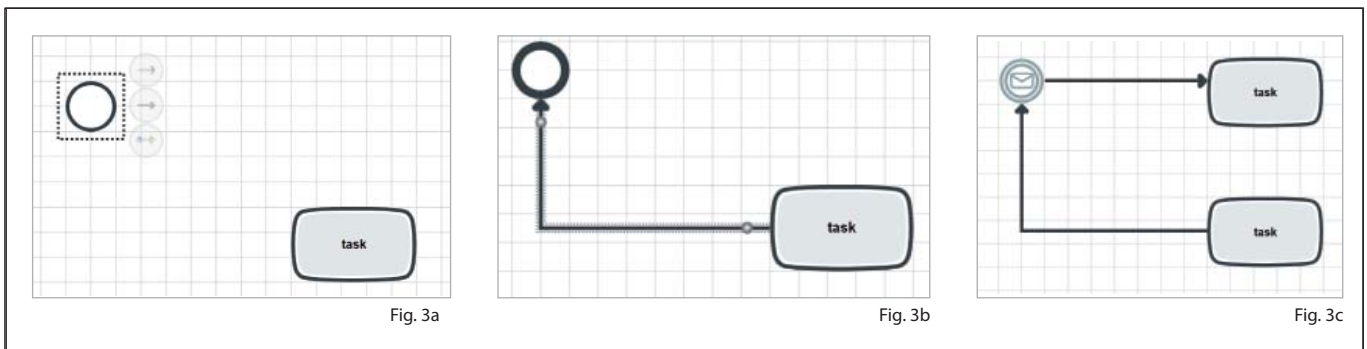


Fig. 3a

Fig. 3b

Fig. 3c

Fig. 3a-c: Automatically Customizing a BPMN Event

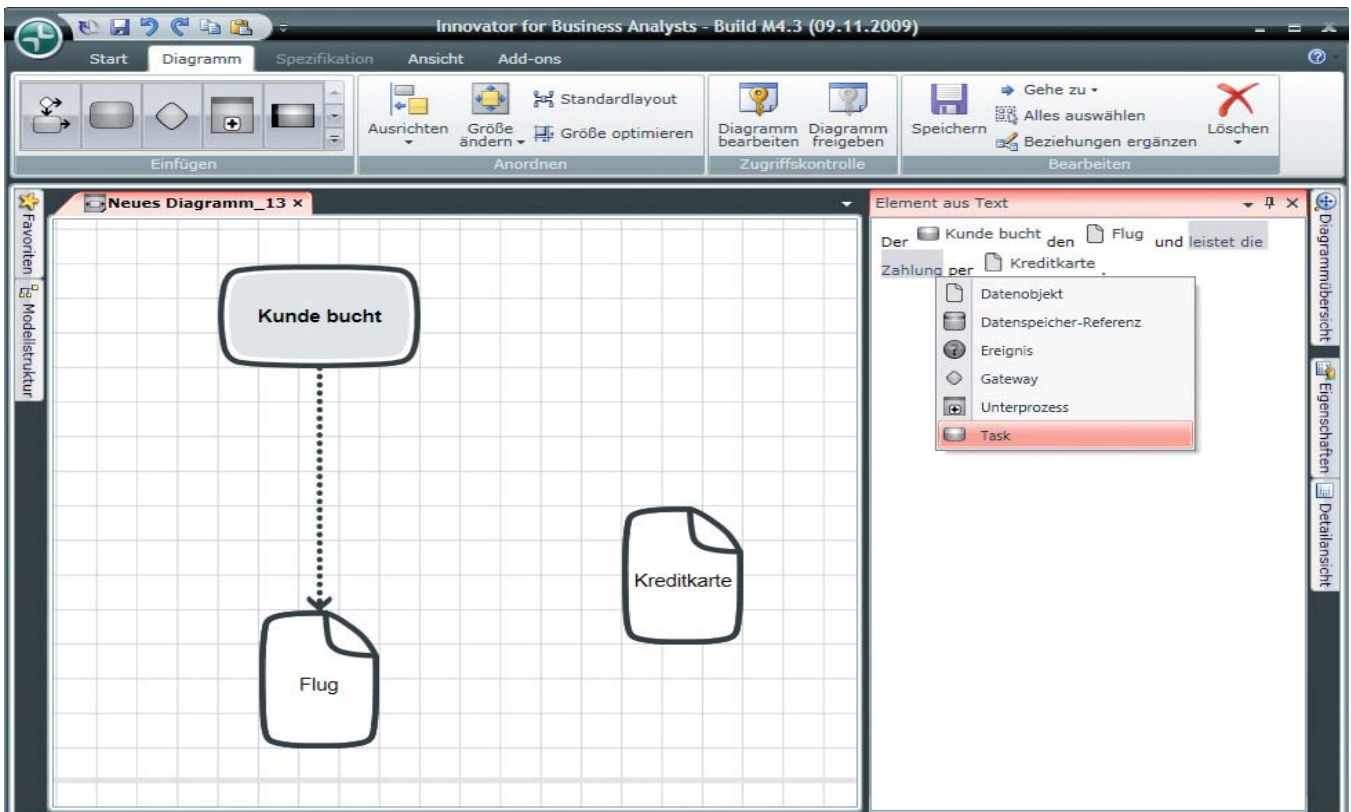


Fig. 4: Using the New Input Help to Easily Mark Text and Move it into the BPMN Element

Similar to UML, this enables BPMN elements to have stereotypes, and in doing so, be extended with additional properties. Innovator ensures that these extensions can only be defined with the appropriate user rights and uniquely distributed in the organization and centrally-controlled using the Innovator server. This ensures that projects always use a uniform version of BPMN.

Business processes are often specified and discussed in e-mails or documents first.

Innovator for Business Analysts contains an input help which enables parts of texts to be highlighted and converted into BPMN elements (Fig. 4). A text is copied e.g. from an e-mail and pasted into a window using copy and paste; it can then be converted into BPMN elements which can be selected using the context menu. These BPMN elements can then be dragged into the top window in the process diagram using drag-and-drop. This enables the user to quickly create BPMN diagrams resulting from discussions.

Using UML Models

The business analyst can use BPMN to model processes. As already mentioned, this is however not sufficient for displaying all information relevant to business analysts. This is why it is also possible to extend BPMN models to include two UML diagrams. They enable use cases to be modeled for systems which e.g. support a process step modeled in BPMN. Fig. 5 shows a UML use case diagram in *Innovator for Business Analysts*.

As with class diagrams, use case diagrams are also UML 2 diagrams which are compatible with the UML models in the UML 2 tool, *Innovator Object*; this then enables the development team to adopt business analysts' models.

Innovator for Business Analysts contains fully-fledged UML diagrams with all the bells and whistles associated with dedicated UML tools, such as using stereotypes and displaying model elements in various diagrams.

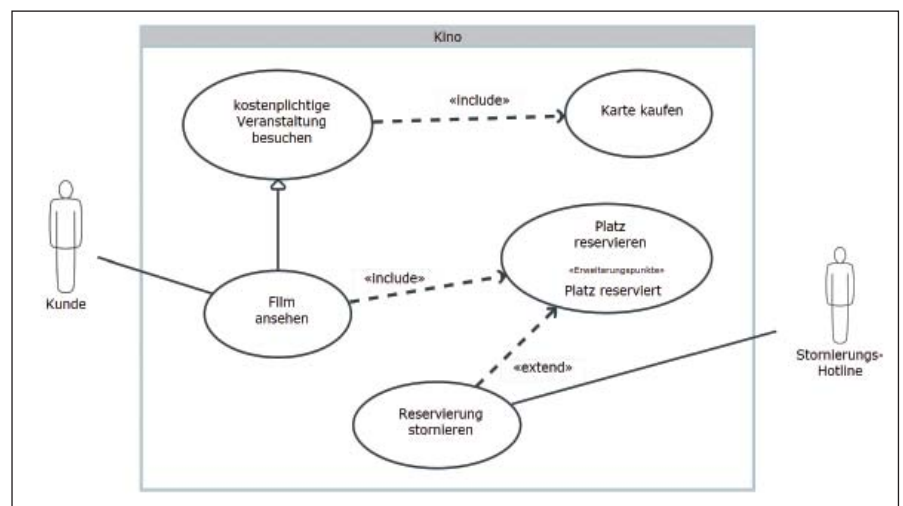


Fig. 5: Use Case Diagram

There are a multitude of options for linking BPMN models to use case models in *Innovator for Business Analysts*. This enables a use case to reference a BPMN task so that it can show that the task is supported by this use case.

BPMN processes can also be used in *Innovator for Business Analysts* for defining scenarios for the use case. And last but by no means least, an option that many modelers have felt was missing in the past: scenarios for a use case can be defined as a path through a BPMN process. This means that various paths through the same business process can define scenarios for use cases; these can then be linked as scenarios with the use case and maintained in the tool.

Whiteboard: Linking Diagrams

Models are powerful means of representing complex information. The ability to create model-to-model links makes it a good medium for expressing model information. Modeling tools are specialized in such a way that they can only display individual diagram types in one editor. Whiteboards, on the other hand, have the

ability to display a variety of different diagrams; lines and arrows can then be used to clearly show how the models are connected to each other. The user often has to copy parts of the diagram into Microsoft Powerpoint or Word to communicate information, as modeling tools cannot normally be displayed in such a way.

With this new whiteboard option, otherwise known as an overview diagram, *Innovator for Business Analysts* enables precisely this model-to-model link to be visualized. A user can simply use drag-and-drop to

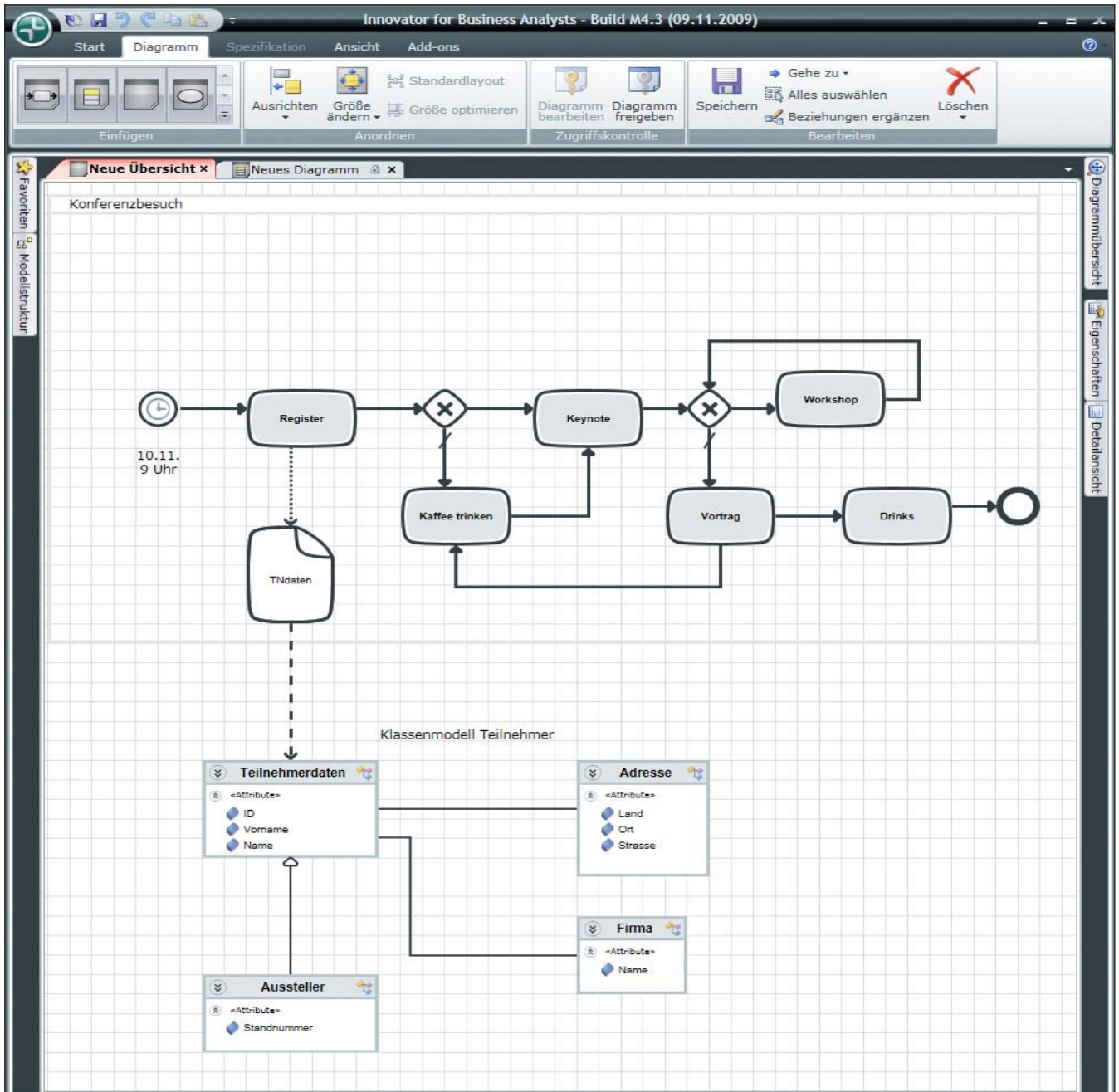


Fig. 6: Combining Diagrams Using the Innovator for Business Analysts Whiteboard

drag diagrams out of the model tree and drop them into the diagram and model links between the models. Diagrams are automatically refreshed when this action is carried out. Even a distributed team working from different locations holding a telephone conference can see the changes automatically. If a class diagram is modified in one location, the business analyst at the other location can see the modification made in their overview diagram in realtime, thanks to the Innovator server.

Fig. 6 shows a BPMN process which contains a data object at a certain point. The lower part displays a class diagram, which shows a class in its structural context. A new link was plotted on the whiteboard; this then means that the BPMN data object is an object of the referenced class. The links mentioned above are visualized between use cases and BPMN processes in a similar fashion.

Innovator for Business Analysts is the first in the line of the innovative generation of modeling tools which combine modeling languages from various standards and, in doing so, provide a tool for a special role – in this case, for the business analyst.



Book Recommendation! Requirements Management & Engineering

The authors of the book explain the “HOOD capability model” (HCM) maturity model and suggest improvements for Requirements Management & Engineering (RM&E).

They start by identifying the wide variety of advantages and uses of RM&E. This is done by presenting examples and facts based on the authors’ many years of experience.

They then conclude by delving into the RM&E material. A bit of background knowledge and secondary literature are a good idea as basic methods are often only briefly introduced.

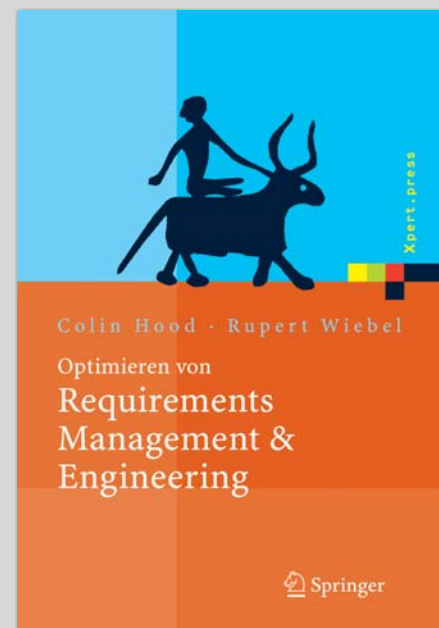
The last section of the book covers the gradual introduction and improvement of RM&E in companies using HCM, including activities, roles and tasks necessary for this. Concrete instructions and support are included which can then be immediately put into practice.

This book really strikes the right note with its interesting firsthand reports and memorable, pictorial comparisons. Or did you already know what defining requirements has in common with a tumble dryer?

Win one of three copies of this book

www.mid.de/buchtipp

Competition ends December 31, 2009. Terms and conditions apply.



Read for you by Ralf Nagel,
consultant, MID GmbH

Integrating Textual Requirements and Models

Innovator for Requirements

Most IT projects start with textual requirements before they are analyzed using models. The fact that these requirements are linked means that modification management and traceability are possible. The user can employ *Innovator for Requirements* to define textual requirements in Word, manage them in the Innovator server, visualize traceability of requirements to the model in various forms using Innovator and, in doing so, analyze the effect of modifications.

Many of our customers use modeling for analyzing and generating code of IT systems. Innovator models are often the place where all requirements and considerations come together in one place for the first time. This approach can be compared to construction of an office building: All users who will use the building once constructed give their different requirements to the developer and architect. These requirements can vary considerably and can either be in written form in a document or by phone or e-mail. Let's take the requirement that the staircase should open to the foyer as an example; the foyer is limited by the building's floor space and the position of the underground parking lot's entrance. The underground parking lot should also be positioned as close to the street as possible and be close to the staircase. All of these requirements only first come together in the architect's designs; these designs are then used as a model for all involved. We would never commission the building to be built with merely the hope that all of these requirements, based on our documents and e-mails, would be taken into consideration. We usually look at the building's model in the form of plans and layout designs and assess whether the overall solution puts the requirements into effect in an adequate form. You might have to sacrifice parts of one or two requirements for the good of another one.

The same applies for model-based analysis of an IT system. Assessing solutions and how they are implemented and how and which requirement goes where in the solution is a lot more abstract and, therefore, significantly more complicated. There

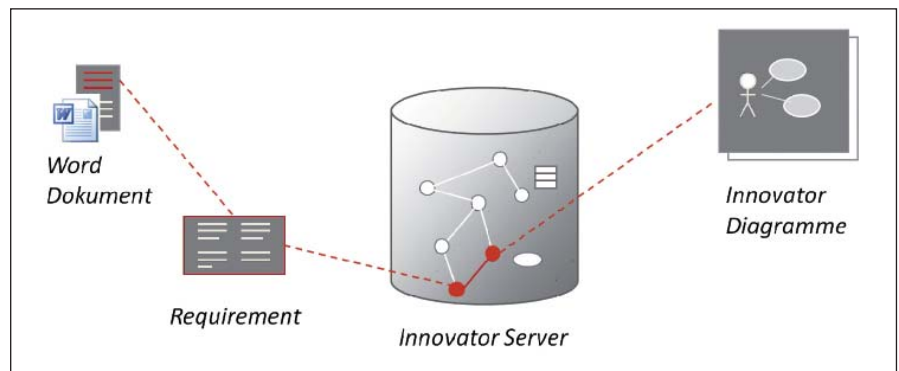


Fig. 1: Innovator for Requirements Links Textual Requirements from Microsoft Word with Innovator Models

are two fundamental problems upon closer inspection:

- It is often not possible for operating departments to model their problems. This is why a lot of information from the operating departments is often recorded in the form of documents which are often very informal, such as e-mails. This creates a workflow which involves the operating department experts continually "feeding" the business analysts or requirements and system analysts with new documents; these documents are then also often changed throughout the course of the project.
- The operating department doesn't know what its actual requirements are until the project has actually started. Let's take a sprint's stakeholder review for agile developments as an example. The department inspects the current progress of the software and determines that the requirements to be implemented do not correspond to the actual requirements. The requirements need to be amended – this is where the "Impact Analysis" plays a decisive role as to which modified

requirements can be changed and at what price.

This is precisely where *Innovator for Requirements* offers the solution of linking the models with requirements and managing them together.

To solve the first problem, Requirements can be defined from the text in Microsoft Word using an Innovator add-in for Word and synchronizing with the Innovator server (Fig. 2). This then works in both directions, i.e. if the requirements modeler comments on requirements, modifies them or adds new ones, these modifications are also transparent for the author of a document in the operating department and they can even make settings so that the modifications are automatically updated on their system.

To solve the second problem, *Innovator for Requirements* has the option of linking requirements to models, e.g. to use case models; this then shows precisely where and how a requirement contributes to the IT system. (Fig. 3).

Textual requirements use the infrastructure which Innovator has already prepared for textual SysML requirements. Fig. 4 shows an example of

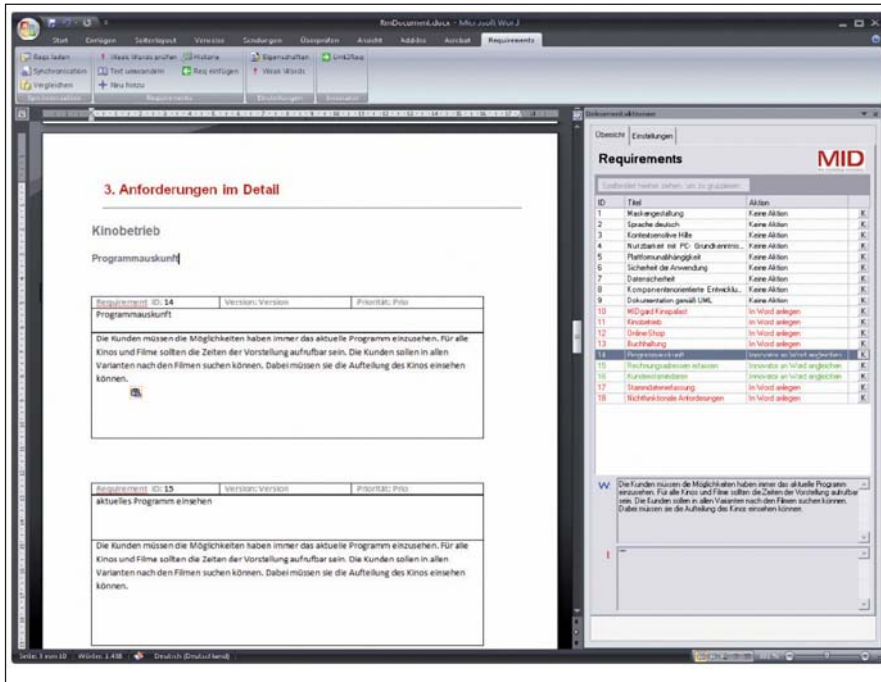


Fig. 2: Microsoft Word with Innovator Add-In. Left: Requirements Document Right: Requirements from the Innovator Server

itself is a priority and needs to have all other properties which a requirement normally has. This also means that the user interface for requirements management should not differentiate between requirements described using models or in written form. Every suitable model element can be a requirement in *Innovator for Requirements*; this means that it is up to the user to decide whether they describe requirements in text or model form.

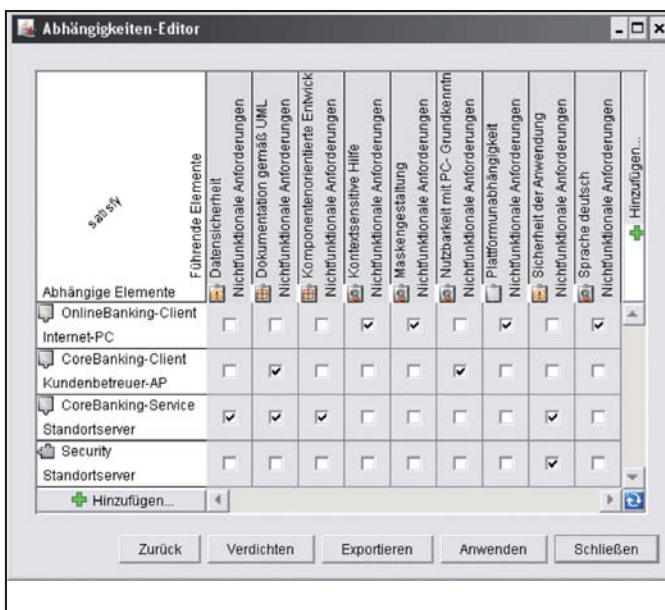


Fig. 3: Traceability Matrix in Innovator Shows the Dependencies Between Requirements and Model Elements

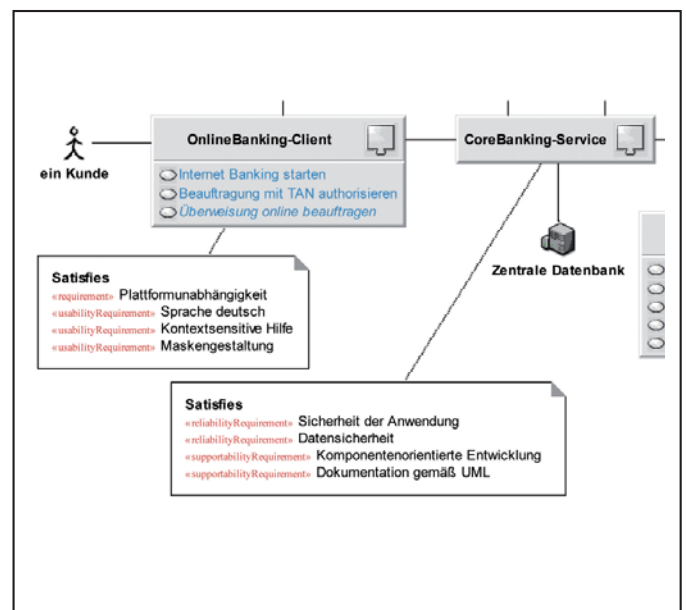


Fig. 4: Visualizing Traceability in the UML Diagram

how requirements are directly linked with UML elements using call-out notes in the diagram. Relationships between requirements can also be visualized under one another. All Innovator editions are extended to include a user interface for editing requirements. *Innovator for Requirements* also includes the Word add-in and an application for managing requirements, including traceability views for impact analysis. This is, however, not a complete solution for the problem: let's assume that

we link a requirement with a use case. There are various variations possible:

- The use case can implement a functional requirement – this is the simplest and most used form.
- The requirement can be a non-functional requirement for implementing a use case – the requirement and use case have another type of relationship in this case.
- The use case itself can be a requirement. If this is the case, a functional requirement is expressed not by text but by a little model. i.e. the use case

Innovator for Requirements received good feedback at its showcase at the REConf Schweiz 2009.

***Innovator for Requirements* will be available at the start of the second quarter of 2010.**



Jochen Seemann, Managing Director MID GmbH

Standard Software

Customization and Deployment Model-Based Standard Software

SAP standard solutions rarely cover all individual customer requirements in corporate practice. Standard solutions from third parties and customer-specific software developments are often also integrated to modify the SAP standard solution or to extend it using add-ons. The SAP solution manager supports implementation and customization of SAP standard solutions throughout their life cycle (Fig. 1). Innovator complements this with the strengths of a model-based approach and thereby increases management efficiency of customer-specific requirements in a standard software environment.

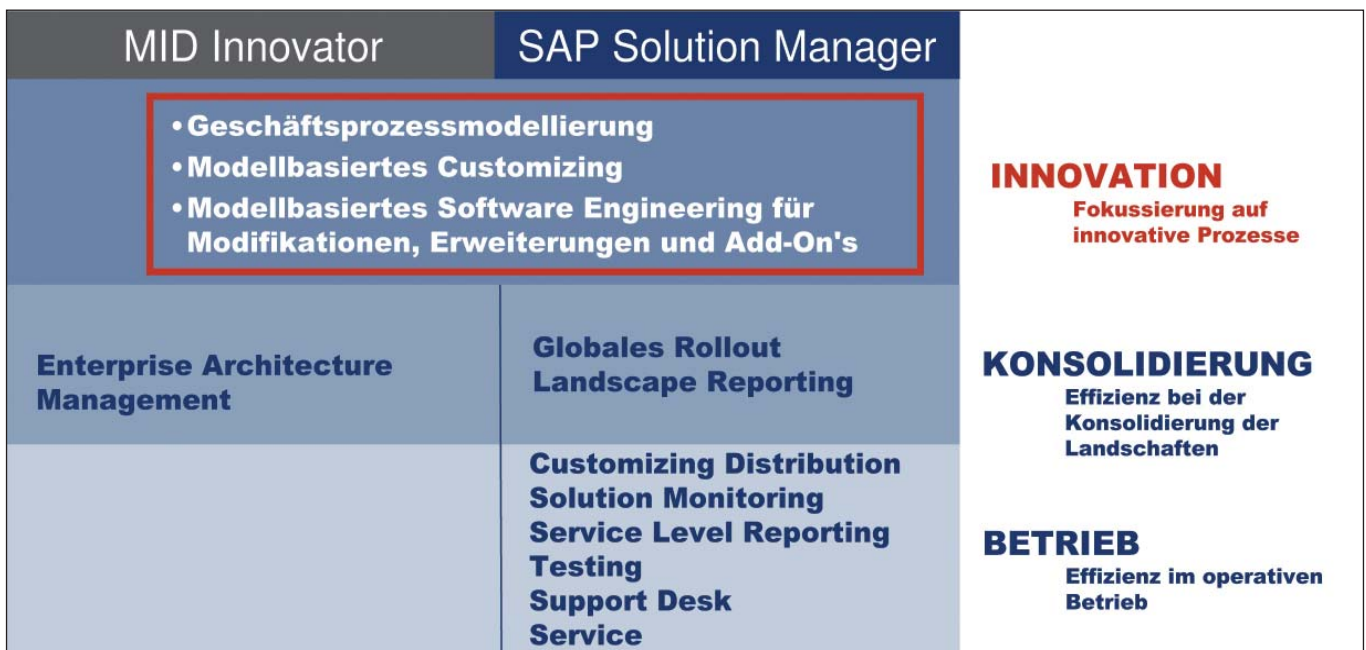


Fig. 1: Innovative Model-Based Implementation: Complete Product Life Cycle Management with MID Innovator and SAP Solution Manager

Fig. 2 shows an example of a model-based implementation and customization in the area of corporate consolidation, which SAP provides a standard solution for. The standard process contains different steps: collecting data material from affiliates, eliminating interwoven corporate data and the final preparing of reports. Model-based customizing efficiently turns these into the standard. A customer-specific process step is also included that adds written external analysis information about the annual statement of accounts to the report data. Extension of the SAP standard function to include this "Find and Attach Analysis Studies" process step is integrated into the standard solution using a consolidation add-on. Modifications and

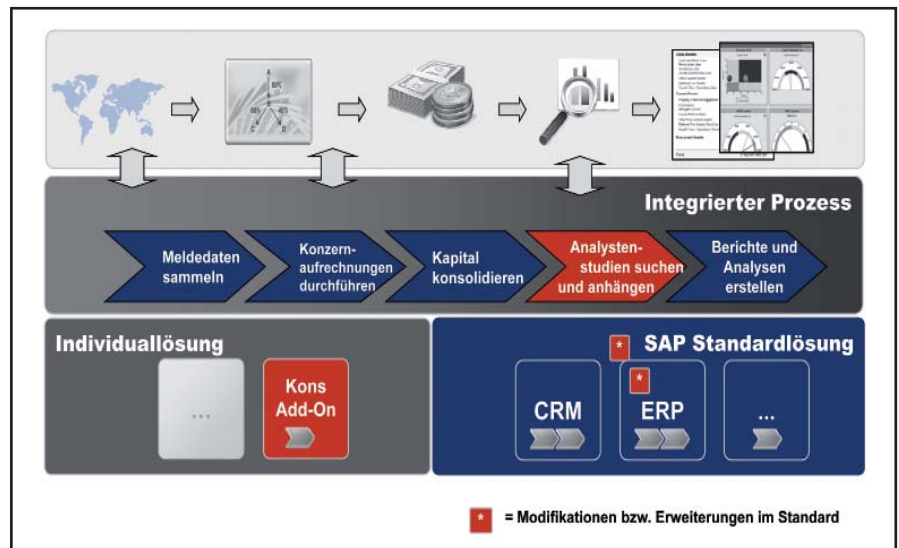


Fig. 2: Example of a Model-Based Customization: Extension of SAP Corporate Consolidation for an Individual Innovative Process

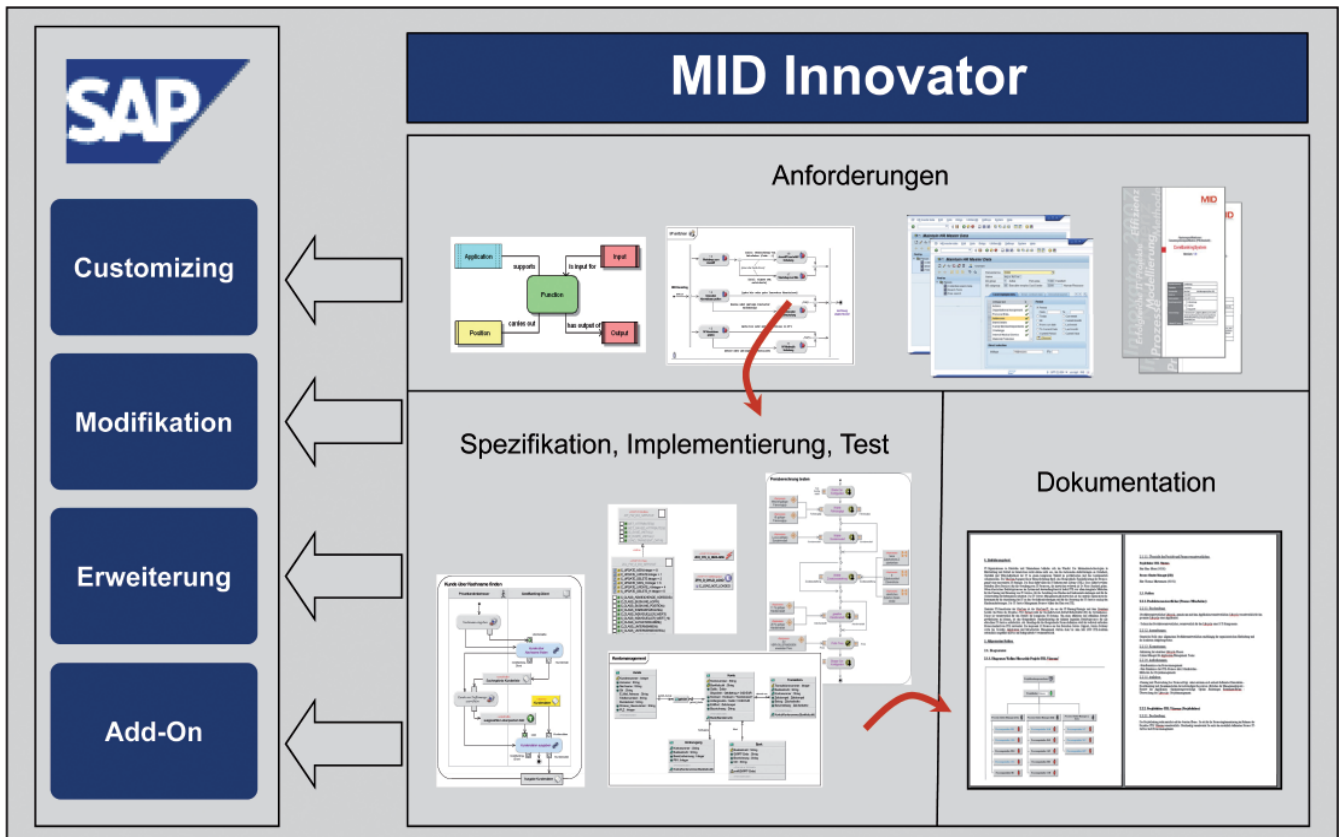


Fig. 3: A Consistent Development Process Will Be Run Through in Innovator; Modifications Will Be Taken From This and Turned into the SAP Standard Environment.

extensions can also be integrated, if required.

Explicit Requirements with Models

Innovator models allow requirements to be described in a form which can be understood by both the operating department and developers. Consistency from requirements right through to implementation is also provided. Implementation details can be established as all respective requirements can always be referred to. Innovator can be used to identify development objects relevant for modifications and for implementing modifications using standardized development methods, processes and notations. This shortens complex implementation projects, keeps the development load to a minimum and ensures maximum reuse of existing information.

All relevant information and relationships are stored in models. This not only facilitates maintenance and each release change, but also reduces dependence on individual people as sources of knowledge: it is easier to

exchange resources, which enables more flexible implementation. These models ensure consistent traceability; this means that effects caused by modifications made in the business process can be seen, measured and planned. Due to its models being linked to each other over every development stage and model levels, Innovator enables traceability of modifications and their effects. This answers questions in the sense of an impact analysis, such as:

- What is affected by modification of a business process?
- What does modification of a business process cost?
- How quickly can you modify a business process?
- How does an SAP standard's upgrade affect our environment?

If the effects of the modifications can be incorporated, planning of an SAP release change is certain and the prerequisite for a complete product lifecycle management is established. Much of the information can be reused and maintenance can be carried out to a high level for innovation, right through to consolidation and operation.

Conclusion

The model-based approach increases efficiency during implementation and customization of SAP standard solutions and brings with it a wide array of advantages: transparency, independence, automation, reusability, maintainability, error prevention and quality. As well as pure business process modeling, Innovator also enables a model-driven customization and modification development.

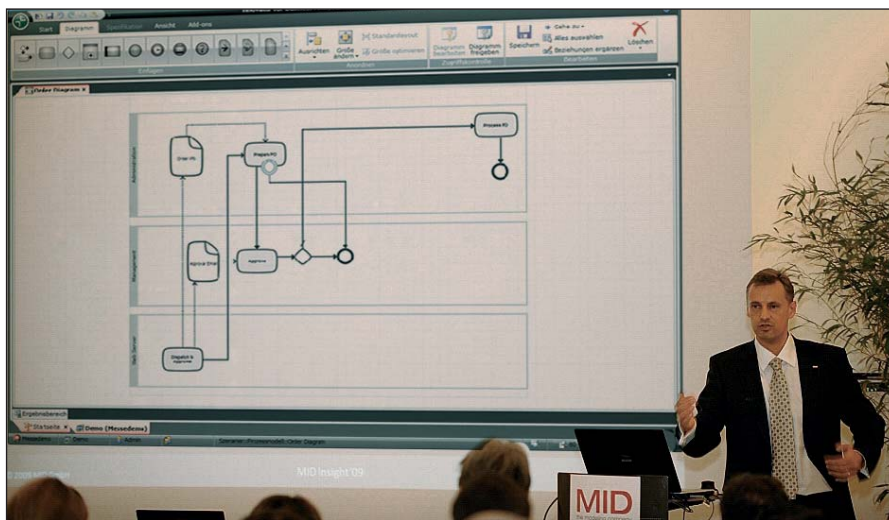


Alexander Fülleborn
Senior Consultant,
MID GmbH

Innovator Community - Insight'09



The MID user conference, Insight'09, once again played host to the Innovator Community for the seventh time in Nuremberg, November 10, 2009. The recession and limited travel budgets did not deter participants to the conference, who numbered approx. 160; this was the same amount as the previous year, which proves its importance to MID clients.



Jochen Seemann Presenting the New Innovator Generation

Premiere: The New Innovator Generation

The new Innovator generation had its debut performance at Insight'09 and was showcased live for the first time by managing director, Jochen Seemann. The first edition of the new tool generation, *Innovator for Business Analysts*, enables effective modeling of IT applications' business processes and requirements with a user interface set out in the style of Microsoft Office. It also enables the combined use of BPMN, UML and GUI modeling.

Better Together - Teamwork with Models

The motto "Better Together – Teamwork with Models" conjured up images of a broad spectrum of modeling topics for the participant, such as SOA, BPM, requirements and business intelligence. The SOA speeches proved to be real participant magnets. Other highlights included Markus Völter's "Modeling and Programming: Two Worlds?" keynote and the practical experience reports from our clients at DATEV, Gmünder ErsatzKasse GEK and T-Systems. The hands-on workshops covering the topics "Modeling Business Pro-



SOA Participant Magnet: Berthold Meier from Oracle Talking About "Efficient Implementation of SOA with Use Case-Driven Analysis Models"



A Sneak Preview of DSLs in the Future with Markus Völter



Demo Points: Live Integration of Partner Solutions with Innovator

cesses with BPMN and the New Innovator for Business Analysts”, “Model Management in Distributed Teams” and “Model Transformations with Innovator” were also firm favorites. The popularity of the workshops meant that there were sometimes two people sharing one of the 14 computer stations available.



Enthusiastic Participants of the Hands-On Workshop

The numerous live demo stations enabled participants to see the new *Innovator for Business Analysts* and integration of partner solutions in detail, such as integration of ALM platforms demonstrated using a Polarion connection, Microsoft Word integration with *Innovator for Requirements*, test case generators connected to Innovator and the partners Imbus and sepp.med. Further demo points showed how ARIS models are integrated into Innovator projects and code generation with oAW and Innovator using XSD/WSDL Generation as an example.



Entertaining: Hubert Schwarz's Keynote

The concluding keynote read by extreme sportsman, Hubert Schwarz, really left you with food for thought - after a jam-packed day of technical information, transition over to the finale was seamless; a glass of champagne, tasty treats and animated discussions proved to really round the day off well.

Participant feedback was very positive. “I’ll definitely be there next year” appeared again and again on rating sheets; with the next date already set, it was easy for them to jot down the date to remember - November 9, 2010.

For more impressions and a copy of the speeches, visit www.mid.de/insight09



Lively Interaction

SOA and Models

MID at OOP 2010

Request your
MID guest ticket for
free entry now
www.mid.de/OOP2010

Wednesday, January 27, 2010, 12:55 p.m. - 1:35 p.m.

Vendor Track

From Business to IT – Model-Driven Development in the SOA Era



How is model-driven development changing in the SOA era?
Which new requirements are knocking on the door for modeling and modeling tools?
Managing director of MID GmbH Jochen Seemann's speech sheds new light on the roles of models for business and IT.

Thursday, January 28, 2010, 9:00 a.m. - 1:00 p.m.

Special Day

Welcome to the 4th Modeling Day

SOA better with Models - from BPM to SOA-Governance

The speakers at the MID Modeling Day share their practical experiences of how modeling, when constructing and further developing a service-oriented architecture (SOA), helps to tackle obstacles and organizational challenges.



SOA-Compatible Modeling of
Business Processes With BPMN
and UML
Thomas Henninger, MID GmbH



Efficient Implementation of SOA
with Use Case-Driven Analysis Models
Berthold Maier, Oracle Germany



Better Service-Modeling Using a
Combination of BPMN und SoaML
Maria Deeg, MID GmbH



Transparent SOA-Governance
with Modeling
Jochen Seemann, MID GmbH



MID guest tickets enable free entry to the Modeling Day, exhibition, keynotes and guest speeches at the OOP 2010.

MID
the modeling company