

Innovator for Business Analysts

Highlights

- **Integrated tool for business analysts, requirements analysts, process modelers, IT architects**
- **Business process modeling with BPMN 2.0**
- **Requirements analysis with textual requirements and mask flow diagrams**
- **Analysis and animation of process flow scenarios**
- **Model use cases with UML integrated with BPMN**
- **Model object structures and link them with class or data models**

Business analysts use an array of various tools nowadays for completing their tasks. These range from Office applications and requirements, right the way through to business process and UML modeling tools. Innovator for Business Analysts is a tool which integrates business process modeling in BPMN with textual requirements on the one hand and IT analysis models into a model and shell on the other hand. Innovator is a smart and modern application with the look & feel of an Office application.

Process Modeling with BPMN

The most important component of Innovator for Business Analysts is an editor for process modeling in BPMN 2.0 (Business Process Model and Notation). BPMN in version 2.0 integrates concepts for mapping process models into an SOA. Innovator is a smarter editor and takes all unnecessary modeling work off your hands where ever possible. It preselects possible element types using the model context so you can concentrate on the contents of the model.

Requirements and Mask Flow Diagrams

Innovator for Business Analysts can be used for realizing textual requirements yourself or for synchronizing Microsoft Word documents using an add-in. These requirements can be linked to all diagrams in Innovator for Business Analysts. This enables the user to e.g. import a business rule

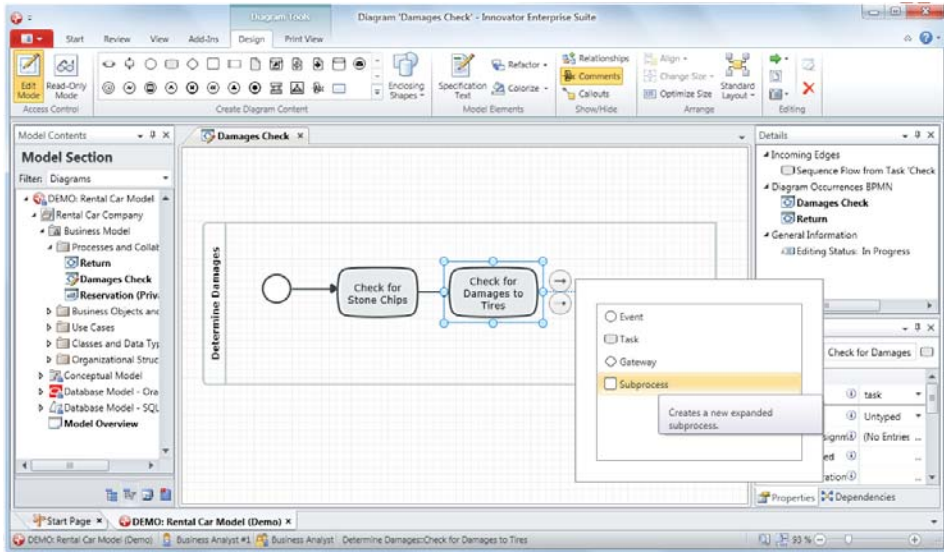
from a Word document as text and link it to the right section in the business process as a requirement. Mask flows often play an important role in requirements analysis. This is because users of an IT application in the operating department primarily use masks, dialogs or windows for communicating their requirements. Innovator for Business Analysts provides a special mask flow notation which was developed based on BPMN. This means that mask flows fit seamlessly with other processes.

Defining and Animating Scenarios

The larger a process is and the more branches it has, the harder it is to recognize practice-oriented paths through the process. However, it is still important to have an understanding for the scenarios behind the process definition. Employees involved in the process need to be able to understand the scenarios just the same as those who want to implement the process using IT.

You can use Innovator to define any number of flow scenarios in a process and animate these scenarios in the tool directly. This allows you to communicate with colleagues from both the operating department and the IT department involved in the project based on concrete scenarios and quickly gain and understanding of the whole process.

Scenarios are important starting points for defining use cases .



Intuitive: Innovator for Business Analysts User Interface

be assigned here or it is also naturally possible to define new requirements.

Structure Models

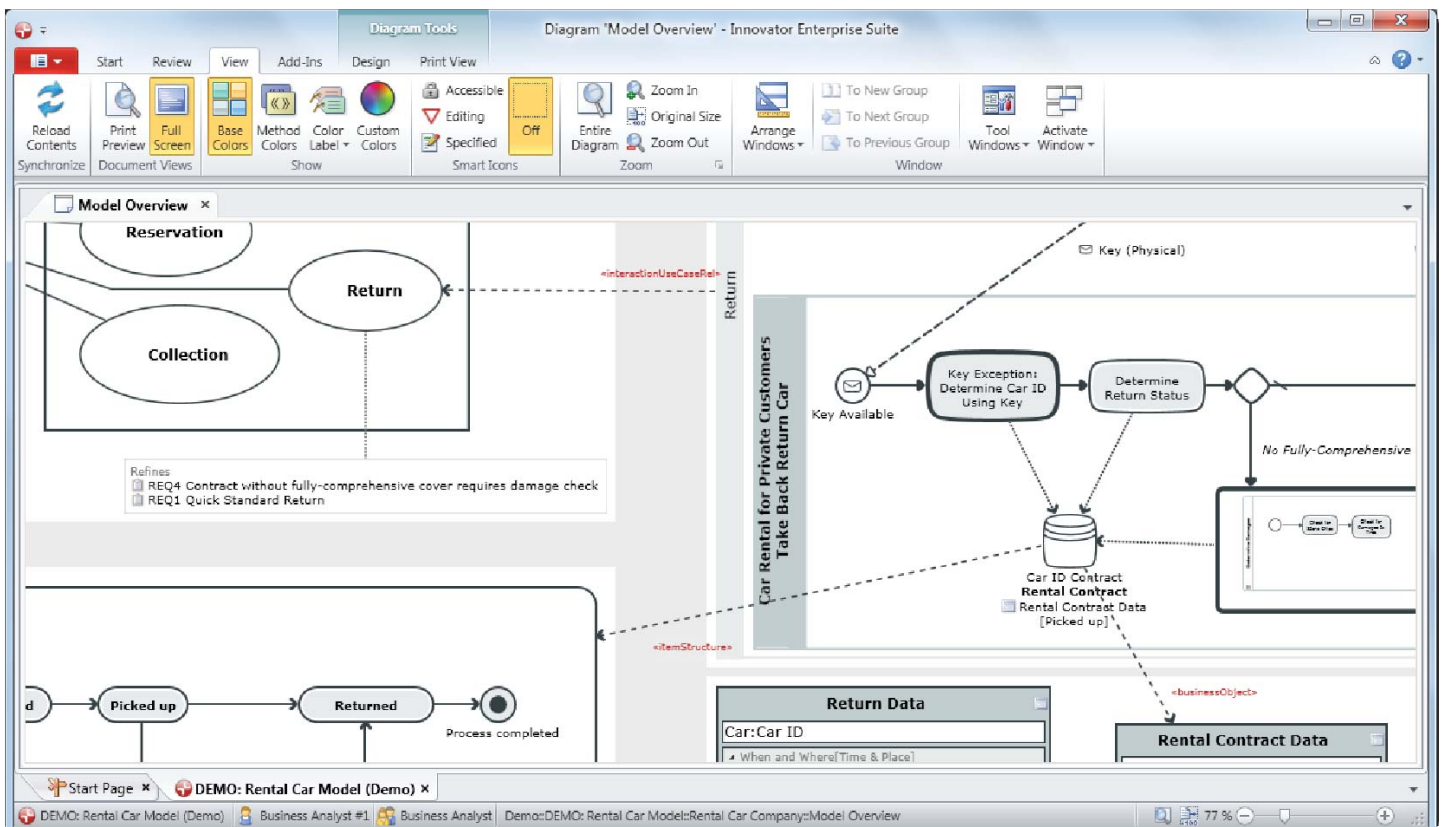
You can link your BPMN objects directly with an existing data model or UML class model to describe your process-relevant data. It is also possible to define the data structure in the structure diagram, regardless of whether you use the UML or data model notations. Structure diagrams are purposefully focused on showing input masks so that the operating department can quickly identify their specifications for input masks in the structure's definition.

If you already have service definitions in WSDL then you can import these definitions into the model so that you can directly use the structure of the service messages in BPMN processes.

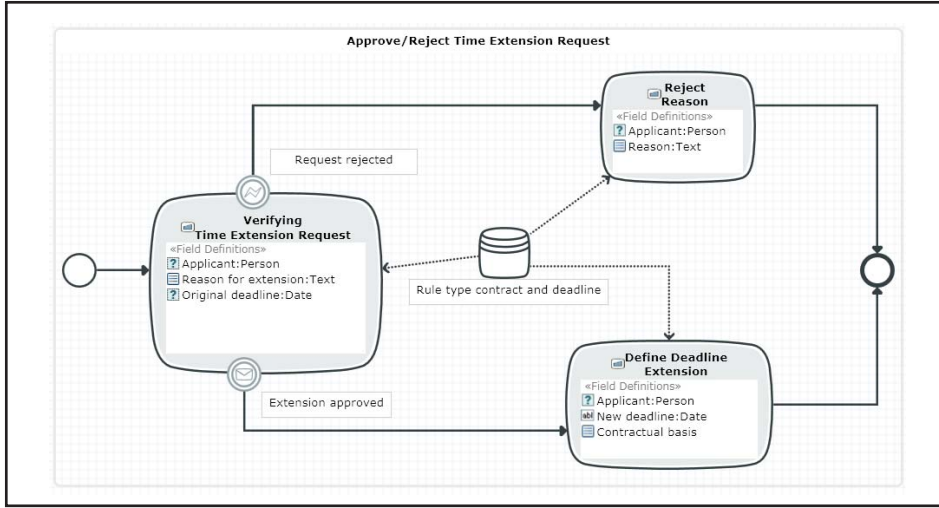
Use Case Modeling with UML

Paths through the process can correspond to various application scenarios of the software supported. As soon as you can derive the software at the

heart of your processes in flow paths and application scenarios, you can model use cases and your actors in use case diagrams using UML and link these with BPMN process path definitions. Existing requirements can also



Combining Diagrams Using the Innovator for Business Analysts Whiteboard



Process with Integrated Display of Mask Fields Used

Whiteboard Diagrams

Modeling tools are specialized in such a way that they can only display individual diagram types in one editor. Whiteboards, on the other hand, have the ability to display a variety of different diagrams; lines and arrows can then be used to clearly show how the models are connected to each other. The user often has to copy parts of the diagram into Microsoft Powerpoint or Word to communicate information, as modeling tools cannot normally be displayed in such a way. With the whiteboard diagram, Innovator for Business Analysts enables precisely this model-to-model link to be visualized. A user can simply use drag-and-drop to take diagrams out of the model tree and drag them to the diagram and model links between the models. The diagrams are always up-to-date. This means that even a team working from two different locations holding a telephone conference can modify a class diagram in one location and the business analyst at the other location can see the modification made in their overview diagram in real-time, thanks to the Innovator server.

Model-Driven Development

Innovator for Business Analysts enables you to directly link business models with UML models in Innovator for Software Architects and with conceptual data models in Innovator for Database Architects. It is important that it is an integrated mapping, i.e. if the business models are modified in the Innovator server, possible effects on the software development and databases can be analyzed straight away as the links can always be evaluated. You can generate BPEL code and export service definitions as WSDL for executable BPMN processes. Innovator for Business Analysts supports BPEL and WSDL, as well as other XML formats.

Features

- BPMN 2.0 process diagram
- Define and animate scenarios as paths through a process
- Use case diagram in accordance with UML for specifying scenarios*
- Organizational chart
- Structure diagram for structuring business objects
- Business resources diagram
- Class diagram for specifying BPMN data objects*
- State diagram for analyzing business objects*
- Whiteboard diagram
- BPMN-based mask flow diagram*
- Model section view with diverse filters
- Attachments (documents or graphics) to model elements
- Integration of textual requirements
- Configurable model elements enable project-specific extensions*
- Central repository server for working in teams throughout the entire company**
- Documents (with customizable reports for HTML and Microsoft Word)*
- API for extensions in Java and .NET (C#, C++, VB.NET)*

* Professional and Enterprise editions only
 ** Enterprise edition only

Innovator - open modeling platform

The modeling platform, Innovator, can help you implement your IT projects more quickly and efficiently:

- Integrated solution, from requirements and business processes right through to application development
- Intuitive user interface and new trend-setting user concept
- Open architecture
- Investment security and reusability through focus on open standards (BPMN, UML, SysML, SoaML)
- Flexible customization using DSLs and profiles
- Central model server supports distributed teams

MID - the modeling company

MID teams are focused on central modeling as a reference for extensive processes in companies and big IT projects. Top German companies and authorities rely on the products, knowledge and support provided by MID - the modeling company. More than 100 specialists put this vision of realizing efficient and effective IT systems with concrete requirements for processes and products into practice. And all this, for more than 30 years.

Processes are created in the standard notations BPMN 2.0 or UML 2 and can be seamlessly transferred into UML or ERM software models. The aim is to develop or generate executable code. A perfected rights and roles concept for all stakeholders, transparent collaboration and powerful functions ensure your model success.

MID GmbH

Headquarters
Kressengartenstrasse 10
90402 Nuremberg
tel.: +49 (0)911 96836-0
fax: +49 (0)911 96836-100

Cologne Branch
Ettore-Bugatti-Strasse 6-14
51144 Cologne
tel.: +49 (0)2203 20271-0
fax: +49 (0)2203 20271-10

Stuttgart Branch
Silberburgstrasse 187
70178 Stuttgart
tel.: +49 (0)711 633859-0
fax: +49 (0)711 633859-10

Munich Branch
Keltenring 7
82041 Oberhaching
tel.: +49 (0)89 95476831-0
fax: +49 (0)89 95476831-9

E-mail: info@mid.de
www.mid.de